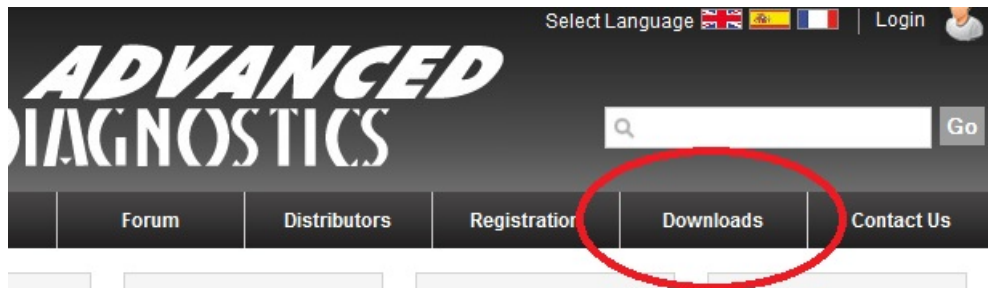


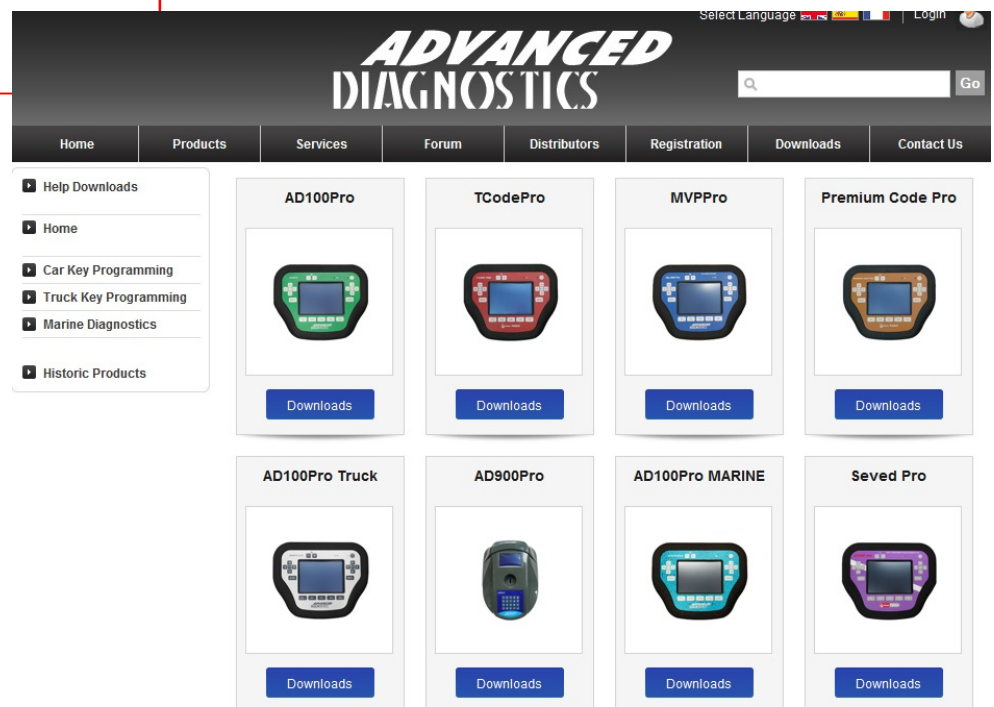
ADVANCED DIAGNOSTICS

INSTALLING THE AD LOADER HELP TUTORIAL



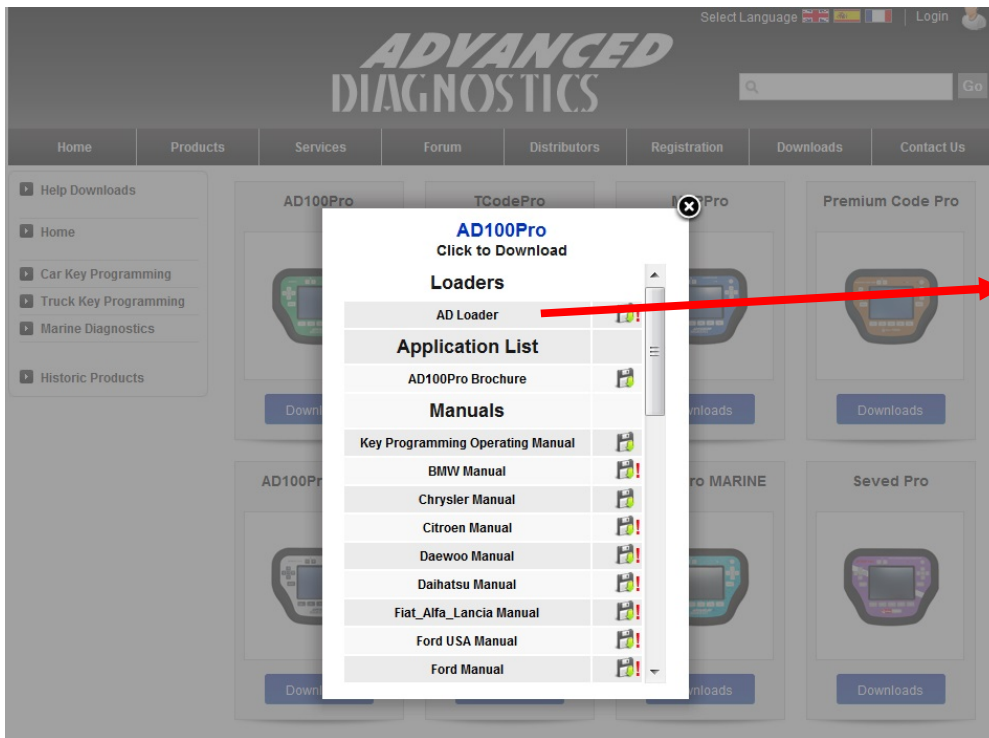
1. Select **DOWNLOADS** from the main Advanced Diagnostics web site.

2. Select the required **PRODUCT** and a pop up screen will be displayed with various downloads for the chosen product.



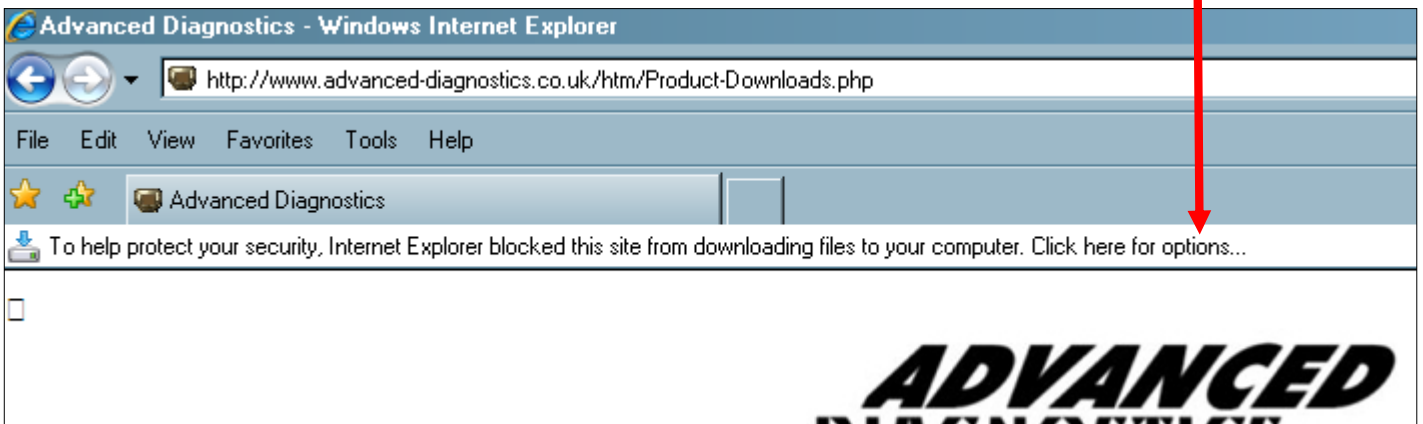
www.advanced-diagnostics.com





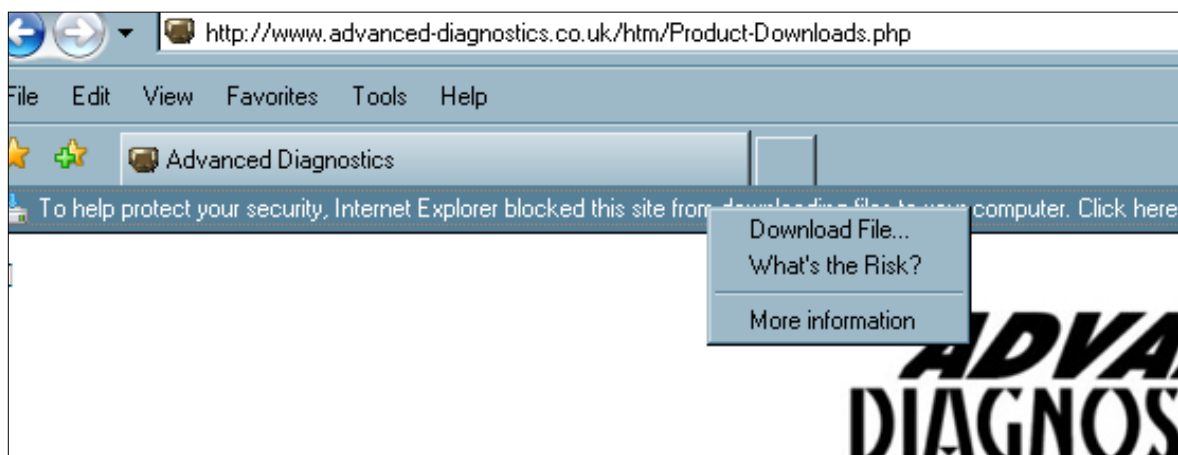
3. Select **AD LOADER PROGRAM** from the menu.

4. When you click on this a warning may appear at the top of your Internet Browser.



4. When you click on this a warning a pull down box will appear. Then click **Download File**

5. Then repeat step 3 and select **LOADER PROGRAM** again.

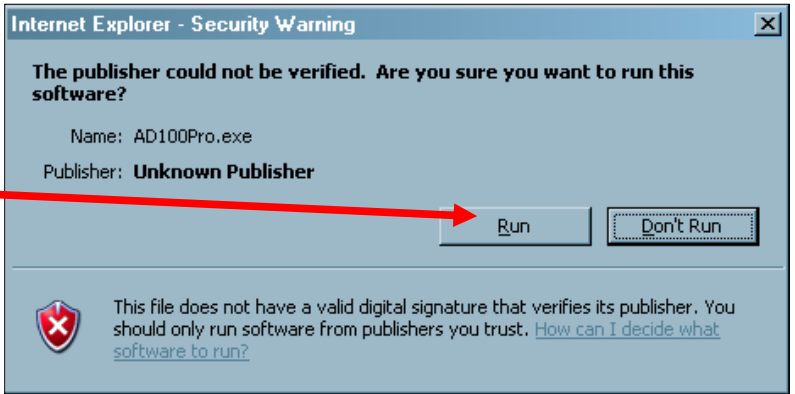


6. The following box will pop up. You can either save the loader program to somewhere on the PC to run OR you can RUN the program.

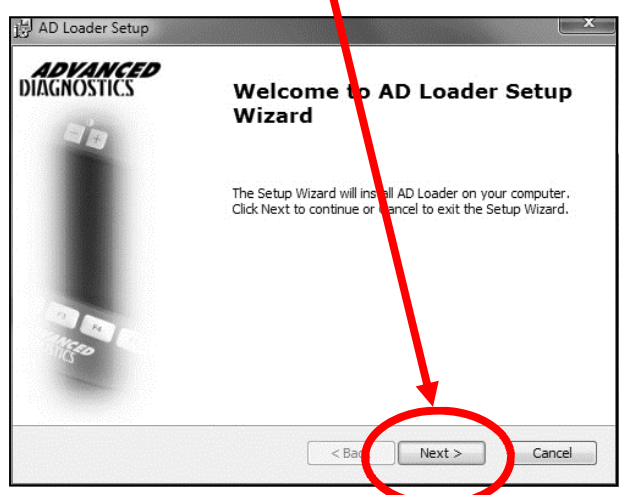


7. Click **RUN**

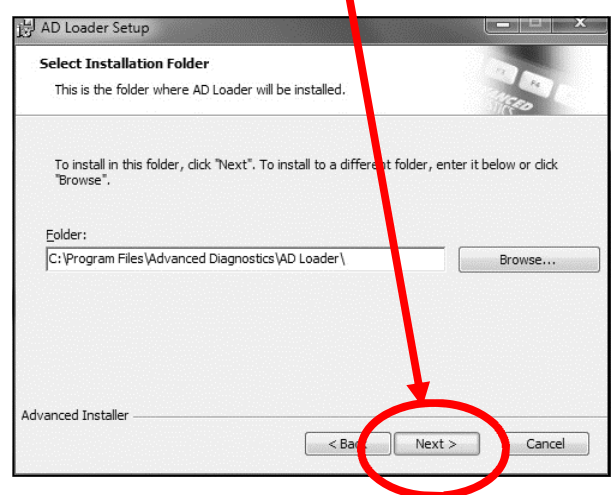
8. A security message may appear, if so, click the **RUN** button.



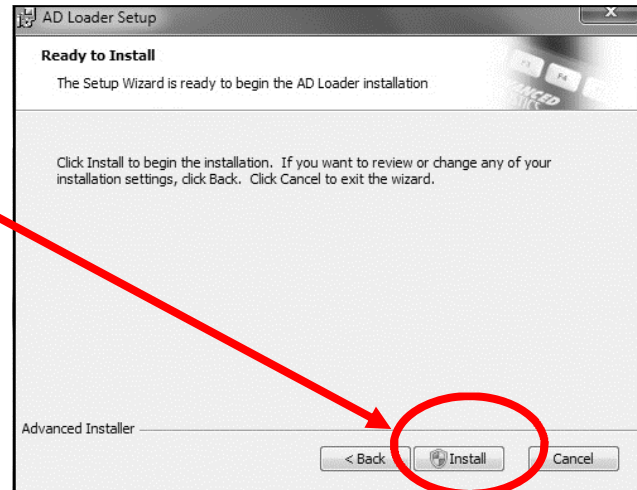
9. Click the **NEXT** button on the Loader Setup Wizard.



10. Click the **NEXT** button.



11. Click the **INSTALL** button.



12. The loader will then start to install.



13. Once installed, press the **FINISH** button to launch the program.



IMPORTANT NOTES

1. MAKE SURE ANY PREVIOUS LOADER PROGRAMS BEFORE VERSION 4.0 ARE UNINSTALLED FROM YOUR PC VIA THE PC CONTROL PANEL, OTHERWISE THE NEW LOADER MAY NOT WORK CORRECTLY.
2. LOADER PROGRAM VERSION 4.0 ONWARDS DO NOT HAVE TO BE UNINSTALLED, THEY WILL AUTOMATICALLY UPDATE.

14. The Program will insert a **Desktop ICON** which you can run by double clicking it with the mouse

OR

you can run the program from the **START, PROGRAMS, ADVANCED DIAGNOSTICS.....**

